

```
// innovate
public class BrainMurmurs extends Software
    implements Design, Development, Innovation {
```

## Pulse Setup Guide For Apple OS X

Pulse Setup Guide For Apple OS X .....	1
Setting up Pulse, your Blackberry, and your Mac.....	2
On Your Blackberry.....	2
Enable Bluetooth.....	2
Make your Blackberry discoverable .....	2
Set your APN (GPRS only).....	2
Start Pulse.....	4
The Pulse User Interface .....	4
On Your Mac.....	5
Pair with your Blackberry .....	5
Enter your login information.....	10
Connecting to the internet with your Blackberry and Pulse. ....	11

```
// innovate
public class BrainMurmurs extends Software
implements Design, Development, Innovation {
```

## Setting up Pulse, your Blackberry, and your Mac

### *On Your Blackberry*

#### **Enable Bluetooth**

Make sure that Bluetooth is enabled on your Blackberry. Seriously, a few of us have gotten nailed by this on more than once.

#### **Make your Blackberry discoverable**

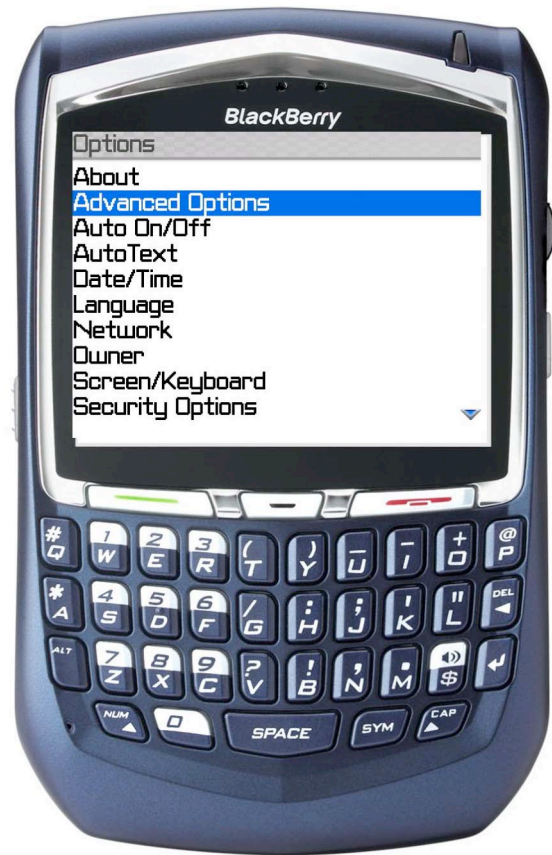
Go to Options/Bluetooth on your Blackberry. Pull up the menu and select “Options.” Make sure that Discoverable: is set to “Yes” or this will be a really short trip. Return back to the main view.

#### **Set your APN (GPRS only)**

GPRS users need to make sure that their APN is set correctly. Go to Options/Advanced Options/TCP. Enter the APN for your network (wap.voicestream.com for T-Mobile users). The user name and password fields should typically be left alone.



**Figure 1 - Options Icon (T-Mobile)**



**Figure 2 - Advanced Options**

```
// innovate
public class BrainMurmurs extends Software
    implements Design, Development, Innovation {
```

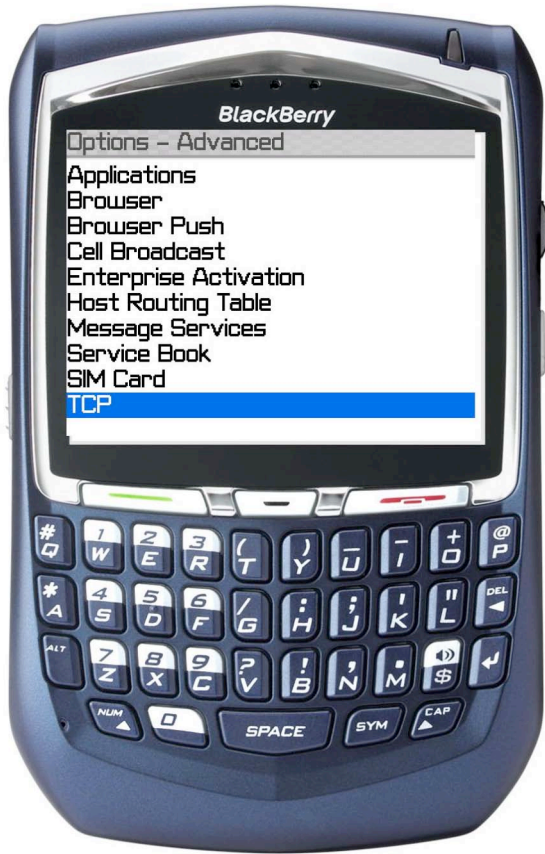


Figure 3 - TCP Settings



Figure 4 - Carrier APN Settings

```
// INNOVATE
public class BrainMurmurs extends Software
implements Design, Development, Innovation {
```

## Start Pulse

Start Pulse, the app with the lackcluster icon. Pulse must be running at the time that you pair your app or this will not work for you.



Figure 5 - The Fabulous Pulse Icon

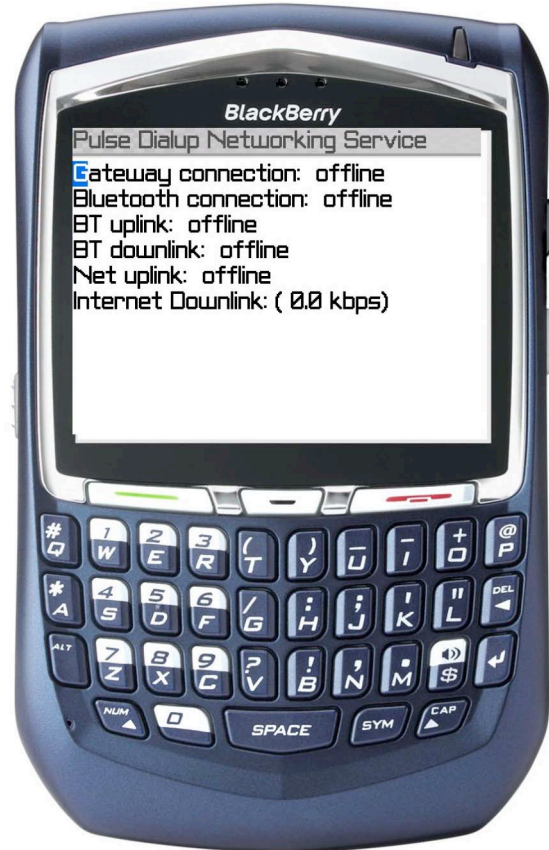


Figure 6 - The Hauntingly Beautiful Pulse UI

## The Pulse User Interface

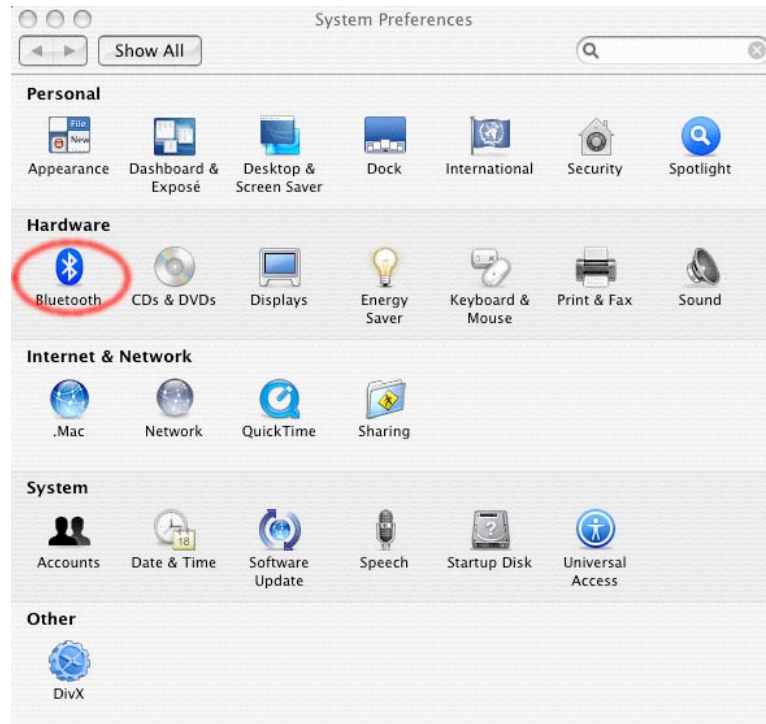
- Gateway connection  
Whether or not a connection has been negotiated with the proxy server.
- Bluetooth connection  
Whether or not a connection has been negotiated with your Mac.
- BT uplink  
Average transfer rate from your Blackberry to your Mac
- BT downlink  
Average transfer rate from your Mac to your Blackberry
- Net uplink  
Average transfer rate from your Blackberry to the internet
- Net downlink  
Average transfer rate from the internet to your Blackberry.

```
// innovate
public class BrainMurmurs extends Software
    implements Design, Development, Innovation {
```

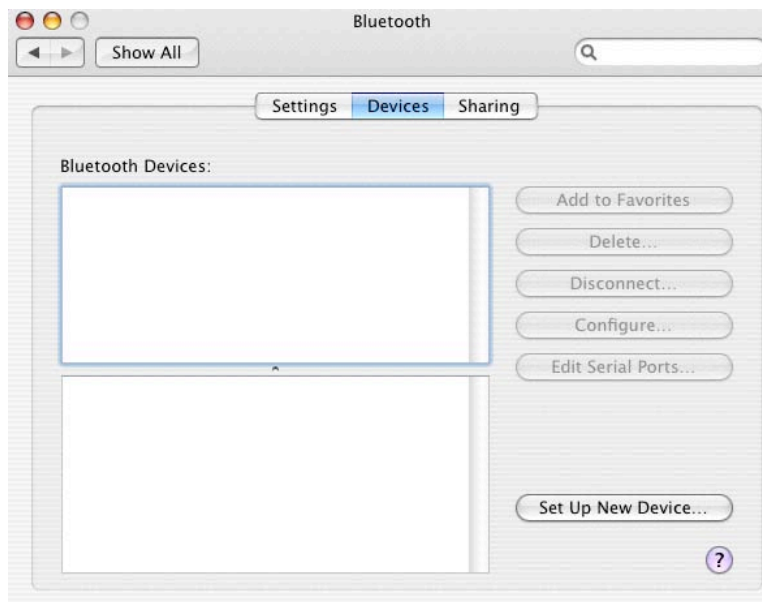
## On Your Mac

### Pair with your Blackberry

1. On your Mac, go to the Apple menu and select System Preferences, then Bluetooth (under “Hardware”).



2. Select “Set Up New Device”



```
// innovate  
public class BrainMurmurs extends Software  
    implements Design, Development, Innovation {
```

3. The Bluetooth Setup Assistant will start. Hit continue.

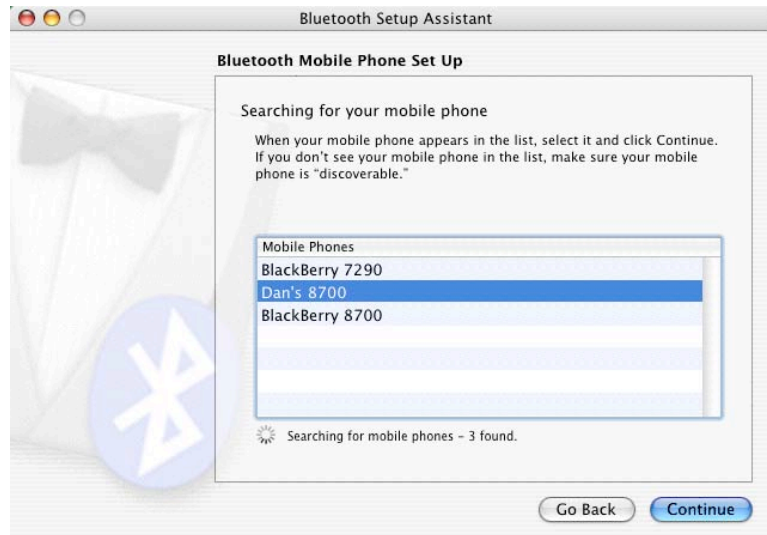


4. Select “Mobile phone” and hit continue



```
// innovate
public class BrainMurmurs extends Software
    implements Design, Development, Innovation {
```

- Hopefully your device will show up on the next page. Make sure that it is selected and hit continue again.

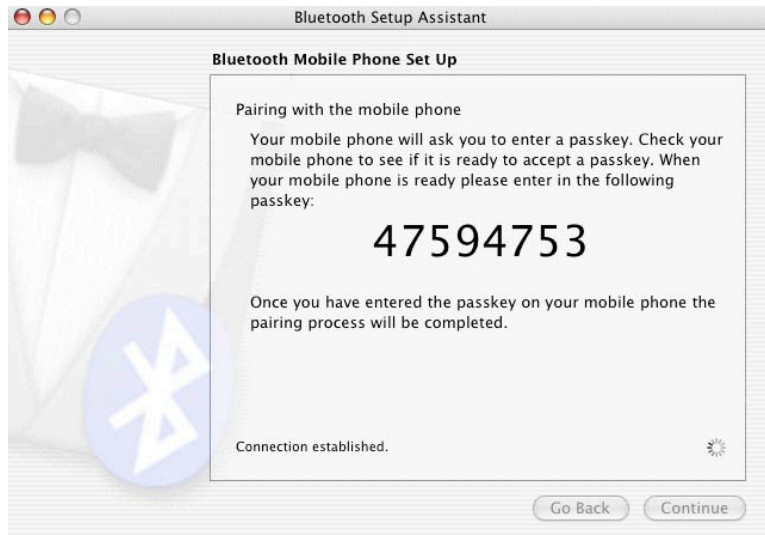


- The next page will say “Gathering information about your device.” Enjoy the page for as long as you like, then hit continue. *During this step your Blackberry will prematurely prompt you to enter your pairing number, then the prompt will disappear.* Don’t worry, this happens to everyone.



```
// innovate
public class BrainMurmurs extends Software
    implements Design, Development, Innovation {
```

7. The next page will say “Pairing up with the mobile phone.” After several seconds you should see an 8-digit number appear. Your Blackberry should suddenly prompt you to enter the number. The Blackberry should say “Pairing with <your computer> complete” and return you to Pulse. The computer should keep working away for several more seconds.



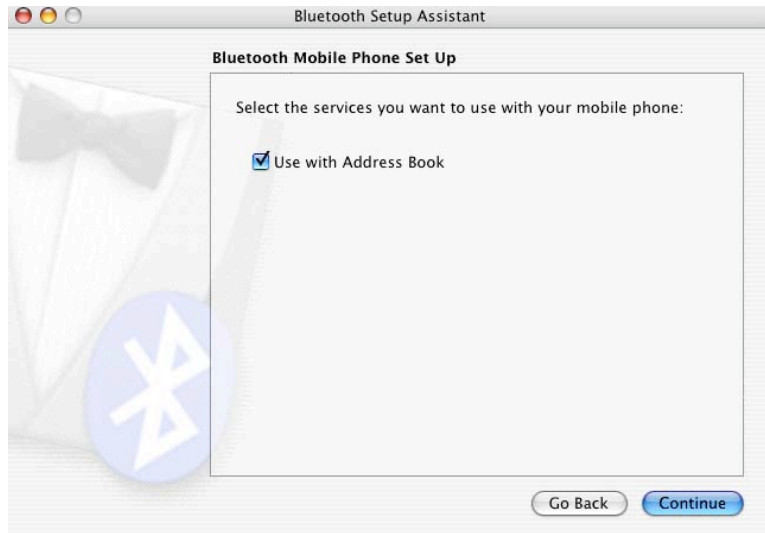
The computer screen should eventually say “Select the service you want to use with your mobile phone” and should list “Use the Address Book” and “Access the internet with your phone’s data connection” (see Figure 7). Make sure that at least the latter is checked, then hit continue.



**Figure 7 - Correct Setup**

```
// innovate  
public class BrainMurmurs extends Software  
    implements Design, Development, Innovation {
```

Alternatively, if you only see “Use with Address Book” (Figure 8) you probably didn’t have Pulse running during this process.



**Figure 8 – Oops – was Pulse running on your Blackberry?**

```
// innovate
public class BrainMurmurs extends Software
    implements Design, Development, Innovation {
```

## Enter your login information

1. Assuming that the previous steps went well, the next page will be your mobile phone setup. Enter the username and password we have provided you. For this beta, please enter yourusername@pulse.brainmurmurs.com in the telephone number section. Hit continue.

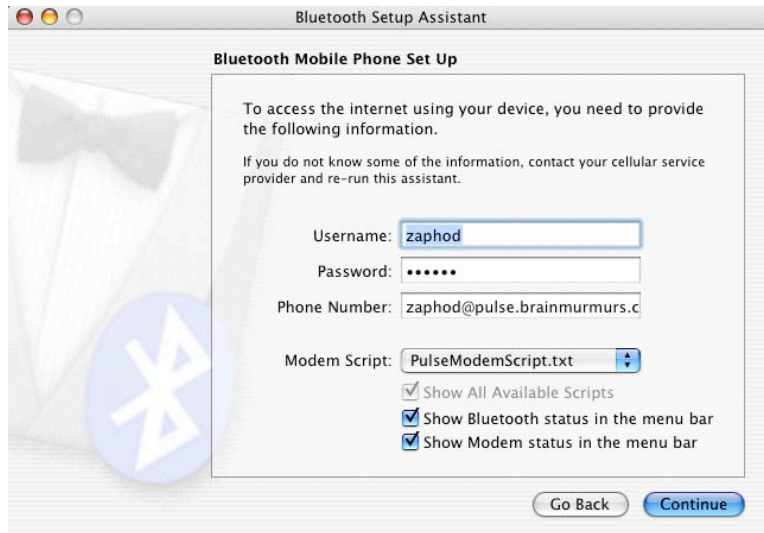


Figure 9 - Login Settings

2. You should now see a summary of your device in the Bluetooth device window:

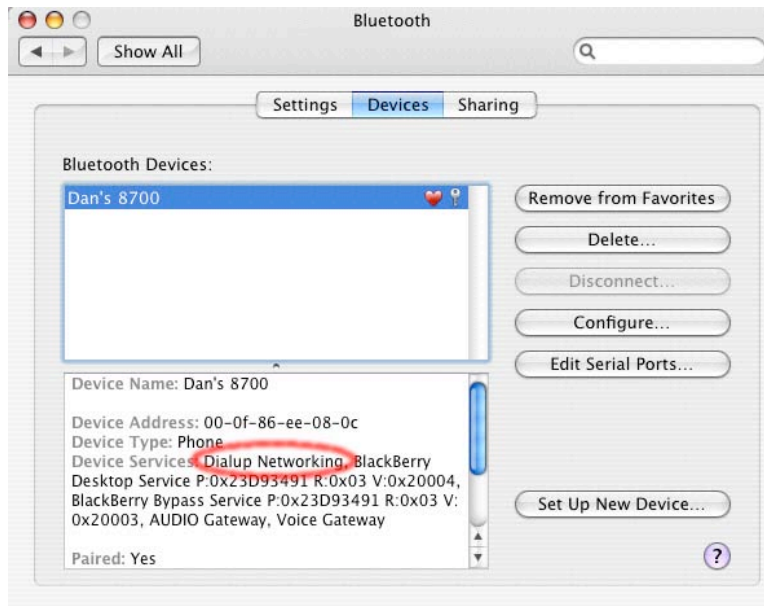


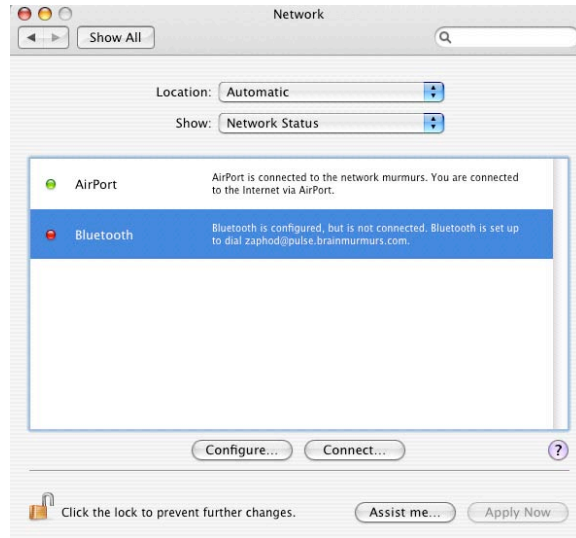
Figure 10 - Device Settings

Make sure that "Dialup Networking" appears under Devices Services when you click on your device.

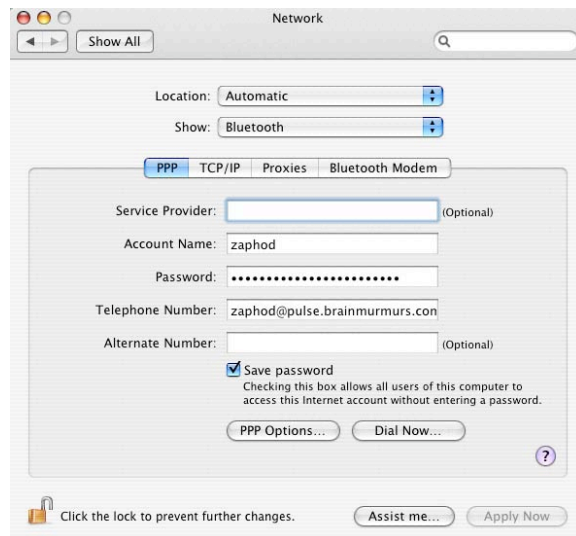
```
// innovate
public class BrainMurmurs extends Software
implements Design, Development, Innovation {
```

## Connecting to the internet with your Blackberry and Pulse.

1. Start Pulse on your Blackberry (with the current release you must, unfortunately, restart Pulse any time you intend to use it to connect to the internet).
2. Select Network from the Internet & Network category under the System Properties page.



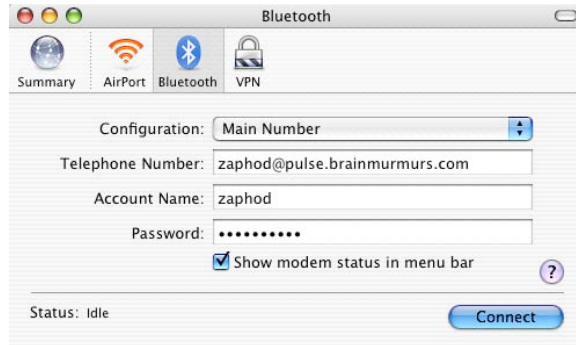
Double-click on “Bluetooth” to move to the next page. This is where we will setup your account information.



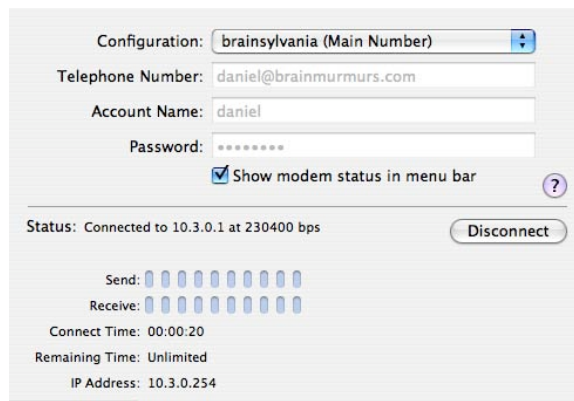
Account Name: your account name  
 Password: your password  
 Telephone Number: account name@proxy host

```
// innovate
public class BrainMurmurs extends Software
implements Design, Development, Innovation {
```

3. Hit “Dial Now...” to connect
4. Make sure that Pulse is running on your Blackberry
5. Hit connect



6. Wait for your connection to be established



7. Surf!

